

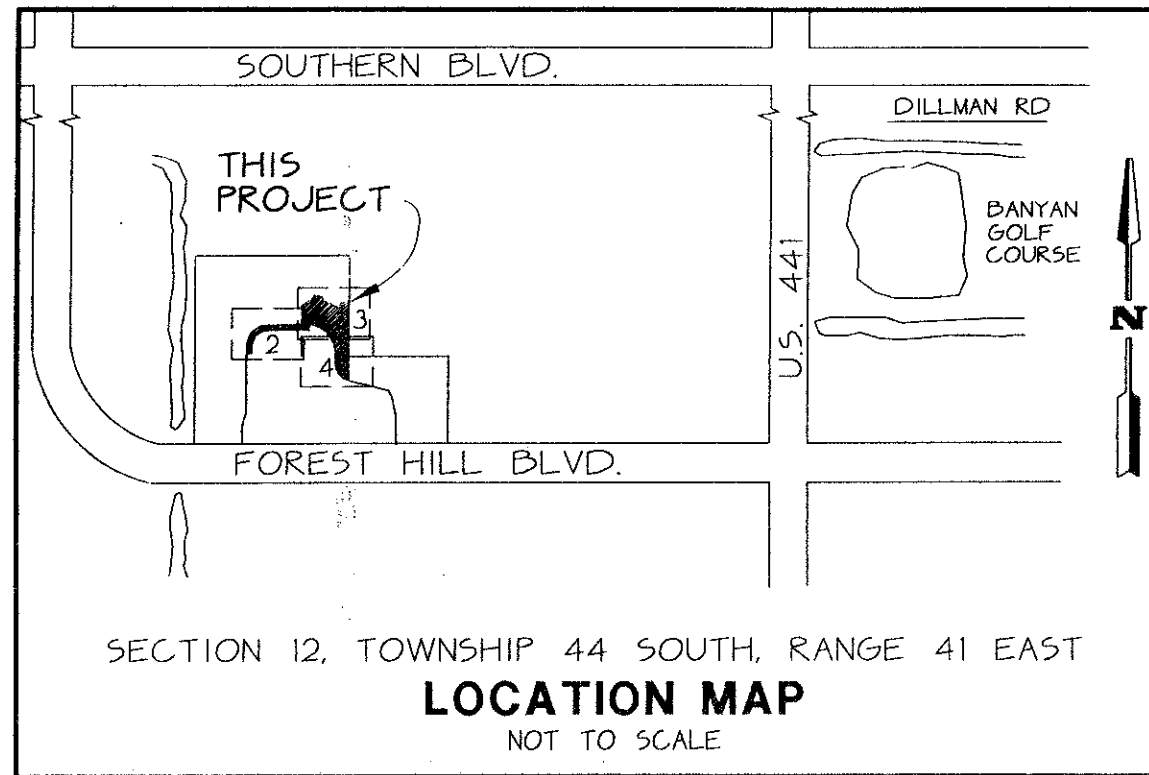
# WELLINGTON'S EDGE, PARCEL 77 - PHASE 1, A P.U.D.

# 165

A PORTION OF THE SOUTHWEST ONE-QUARTER (SW 1/4) OF SECTION 12,  
TOWNSHIP 44 SOUTH, RANGE 41 EAST, PALM BEACH COUNTY, FLORIDA

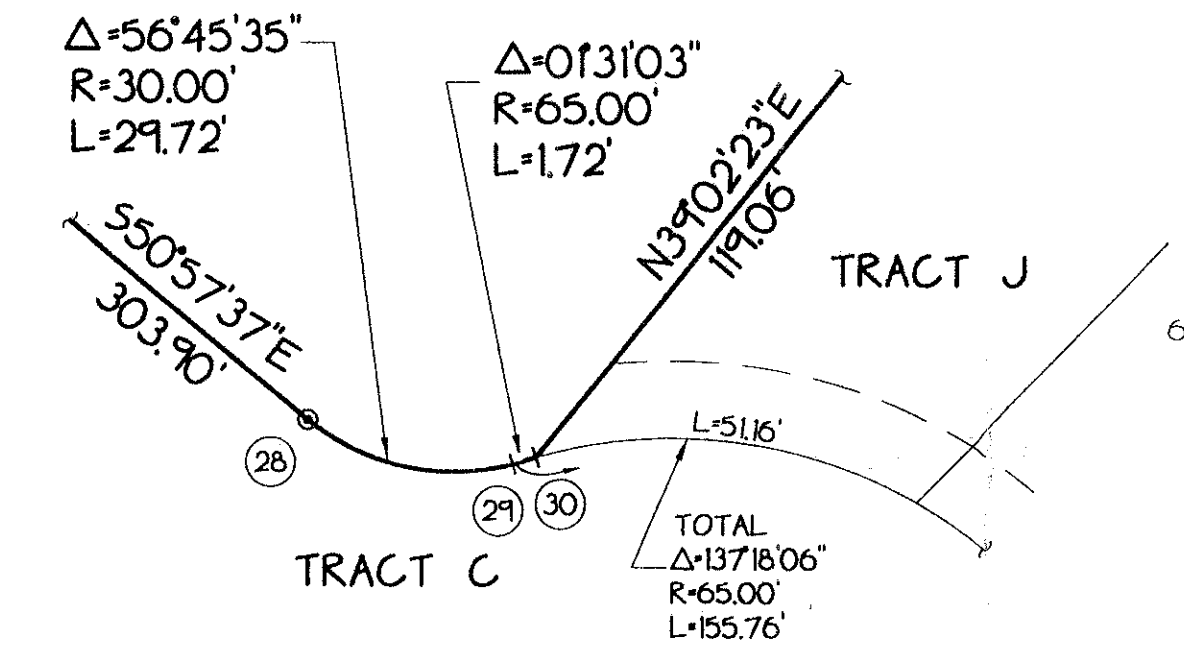
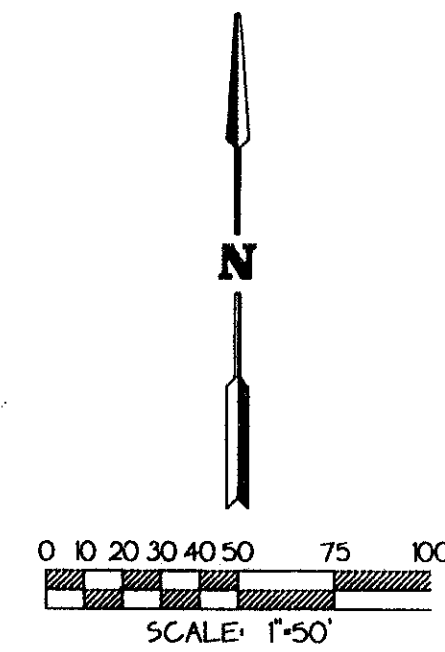
THIS INSTRUMENT PREPARED BY JAMES E. PARK, P.L.S.  
WILLIAMS, HATFIELD & STONER, INC. - ENGINEERS PLANNERS SURVEYORS  
1901 SOUTH CONGRESS AVENUE, SUITE 150, BOYNTON BEACH, FLORIDA 33426

SHEET 3 OF 5

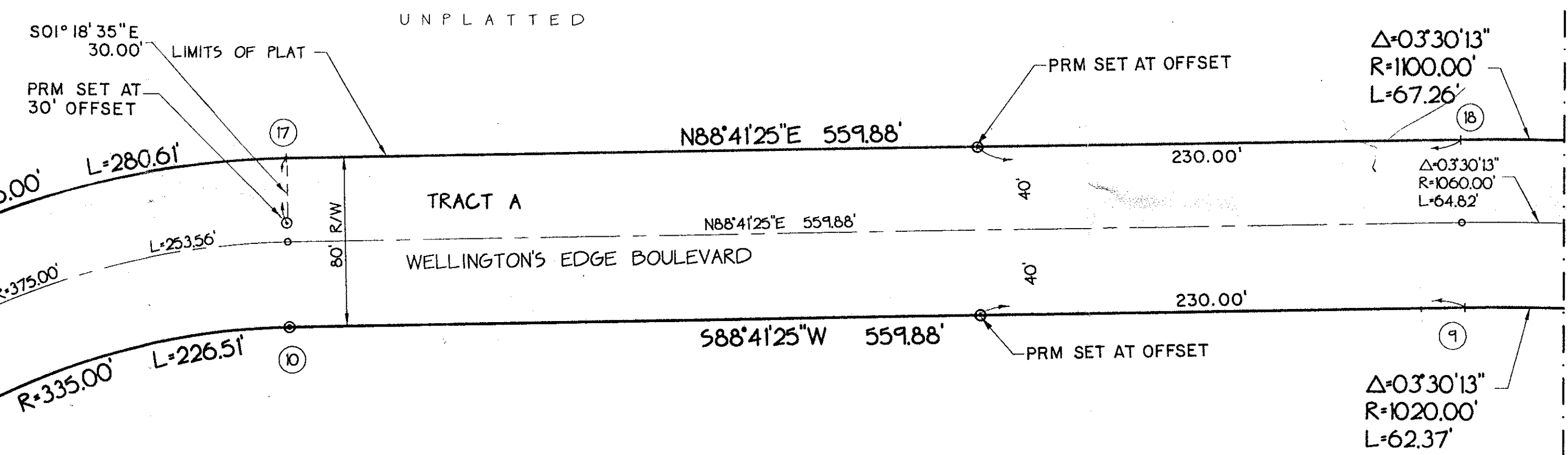


POINT NUMBER	NORTHING	EASTING
1	8450726192	913800.3306
2	8439317600	913770.9403
3	8442735382	913499.9886
4	8443777308	913502.2830
5	8447828911	91326.3114
6	8447068547	91311.4640
7	8447231770	913100.2351
8	8447333084	912635.6848
9	8447337888	912773.3231
10	8447203877	912135.628
11	8446425000	912005.6817
12	8443826575	911878.4161
13	8443476839	911877.0473
14	8443508075	911747.0721
15	8443857812	911748.4408
16	8447037377	911954.2027
17	8448009626	912211.7270
18	8448137688	912771.4435
19	8448132507	912838.7463
20	8448127762	912831.0774
21	8450189121	912858.9705
22	8451685684	913019.9860
23	8453259453	913112.5450
24	8453056203	913506.367
25	8453724548	91362.88890
26	8452134208	913291.0843
27	8451844666	913337.6294
28	8449930531	913573.6779
29	8448777780	913601.9050
30	8448882803	913603.3518
31	8450807591	913678.3436
32	8450754315	913611.636

NOTE:  
PLAT BEARINGS SHOWN HEREON ARE ON A GRID AZIMUTH (NAD 27, 1972 ADJUSTMENT) AND ARE NOT INTENDED TO BE ON THE SAME GRID BEARING OF THE STATE PLANE COORDINATE VALUES SHOWN HEREON WHICH ARE BASED UPON THE NAD 83, 1990 ADJUSTMENT.



DETAIL "B"  
SEE SHEET 3 OF 4



MATCH LINE - SEE SHEET 3 OF 4

WELLINGTON'S EDGE, PARCEL 76 - PHASE 2A, A P.U.D.  
PLAT BOOK 75, PAGES 47-48

WELLINGTON'S EDGE PLAT NO. 1  
PLAT BOOK 63, PAGES 49 - 51

WELLINGTON'S EDGE, PARCEL 76 - PHASE 1, A P.U.D.  
PLAT BOOK 73, PAGES 160 AND 161

PET 86-32 N  
5/2/14/G

# 0332-113

Wellington's Edge  
 TAZ-732  
 76  
 B  
 86-141  
 Wellington's Edge